



IMPACT REPORT

BRAVE | 2021-2022



connectfutures
Creating Change Together

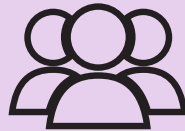


BRAVE, or Building Resilience Against Violence and Extremism is a 90 minutes interactive training to engage young people on issues related to gang exploitation and violent extremism, deepening understanding and building resilience in a practical, real-world way.

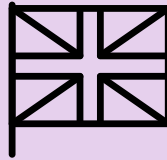
BRAVE is rooted in lived experience bringing the value of first hand, lived stories of victims and perpetrators to life for live and online audiences. The programme is rooted in practitioner experience and on-going research.

Tailored to settings including **KS2 | KS3 | KS4 | KS5 | SEND | SEMH | PRUs | Community settings**

NATIONAL IMPACT



DELIVERED TO **25,641**
YOUTH PARTICIPANTS
AND **383** ADULT LEARNERS



IN **12** LONDON BOROUGHS AND **13**
UK CITIES

COVID-19 ADAPTATIONS

- Face-to-face delivery, with PPE and testing
- Live virtual delivery, with activities and opportunities for discussion
- Our BRAVE films, worksheets and resource packs
- Highly flexible to ensure as wide a reach as possible

We loved the testimonial, it was so honest and open. It was very moving. Both presenters were engaging and made the session accessible throughout.

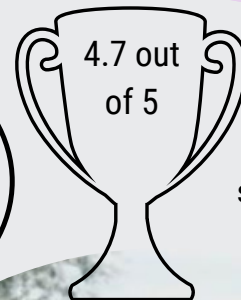
BRAVE Professionals
Participant testimonial

The session was engaging throughout, even online which I often find difficult. The facilitators had a great level of knowledge and were able to share specific examples and experiences to help our understanding.

BRAVE Professionals
Participant testimonial,

Students learnt about grooming methods used by gangs and extremists. It was a focused session and the young people seemed to engage well with the facilitators.

BRAVE Teacher testimonial



Average participant score for satisfaction and impact



For further information please contact:

- zubeda@connectfutures.org
- Freya.Brocchini@StGilesTrust.org.uk